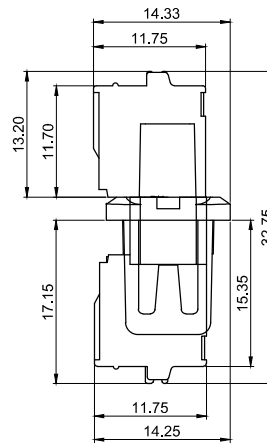
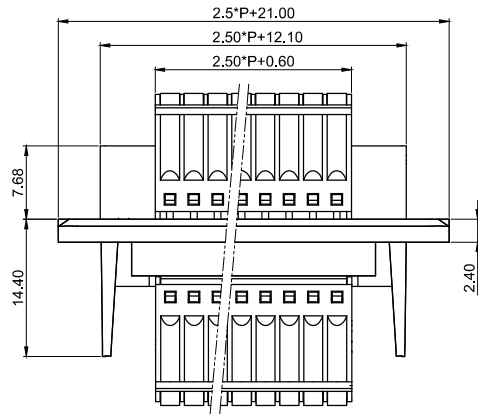
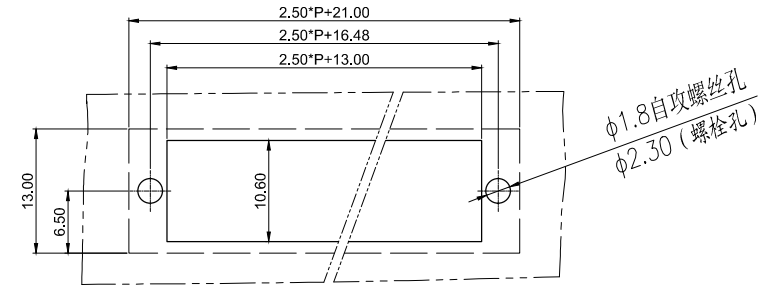
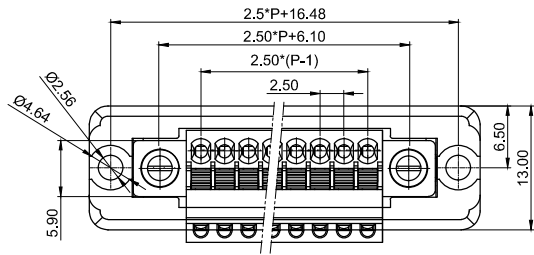


REVISION RECORD			
REV.	CONTENT	MOD.	DATE
△	初版发行		



NOTES:
 Pitch : 2.5mm
 Rated Voltage : 150 V
 Rated Current : 4A
 Withstand Voltage :
 AC2000V for 1 minute
 Using Temperature Range :
 -40°C ~ +105°C
 Wire range :24 ~20 AWG

技术要求:
 间距: 2.5mm
 额定电压: 150V
 额定电流: 4A
 耐电压值: AC2000V/min
 使用条件: -40°C~+105°C
 适用线规: 24~20 AWG

11	LC6M-2.5-本体	1023M0YXXAV	1	PA66-V0	
10	LZ5X-2.5-主体	1187A0YXXAV	1	PC	
9	LZ1-5.08-螺母	SM00B250000V	2	黄铜	
8	LC1-耳朵螺丝	SPOYA255101V	2	碳钢	三价铬钝化彩锌
7	LC6-2.5-夹子	1023B0001AV	P	黄铜	镀镍
6	LC6-2.5-盖板	1023C0YXXAV	P	PA66-V0	
5	LC60-2.5五金件	2090B0001AV	P	磷青铜	镀亮锡
4	LC6-2.5-弹片	F2A0DLC625BV	2P	不锈钢	
3	LC6-2.5-按钮	1023D0YXXAV	2P	POM	
2	LC60MG-2.5-盖板	2091C0YXXAV	1	PA66-V0	
1	LC6-2.5-本体	1023A0YXXAV	1	PA66-V0	
NO.	NAME OF PART	NO. OF PART	Q'TY	MATERIAL	NOTES
DES.	CMZ	DATE	24/08/19	UNITS	MM
CHK.		DATE		SIZE	A4
APP.		DATE		SCALE	1:1
				DWG NO.	SP-1-2081140
				REV:	V0
				TITLE	LC6M-LC60MG-LZ5X-2.5-XXP-1Y-00A
					LC6M-LC60MG-LZ5X-2.5-成品

	pitch dimension			Nominal dimension					— ▭ ⌒
	over 0	over 6	over 10	over 0	over 30	over 60	over 100	over 150	
variable range	to 6	to 10	to 24	to 30	to 60	to 100	to 150		
Tolerance	±0.1	±0.15	±0.25	±0.2	±0.3	±0.5	±0.7	±1.0	



上海联捷电气有限公司
 Shanghai Elinker Electric Co., LTD